



Fabric & Dimensional Cloud


Fabric

The trusted classic. We love the simplicity of our functional fabric-wrapped acoustic clouds. Call it like it is, right? A cost-effective and known solution to controlling sound in any space, these come in various standard sizes and are offered in several thickness options to accommodate all budgets.

Don't Mess with A Good Thing, Perfect It.

Meticulously crafted like your future depends on it, because it does.

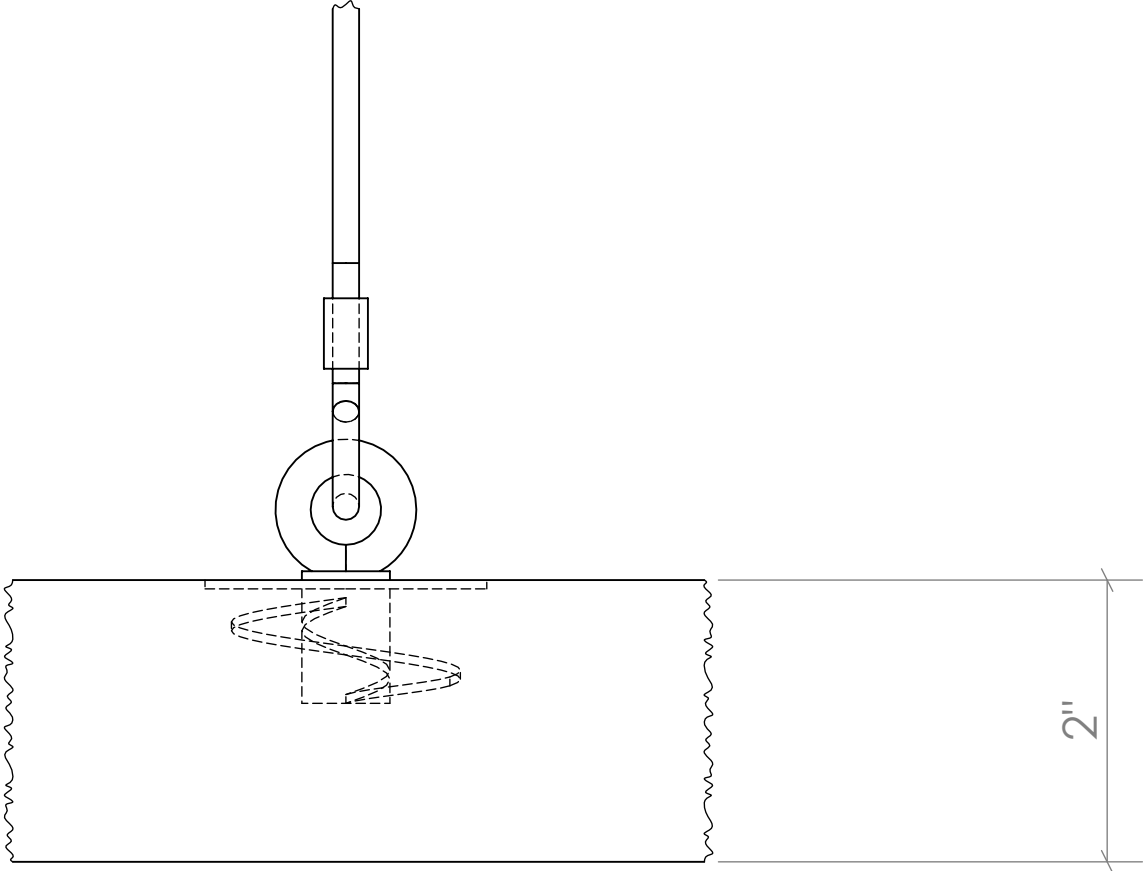
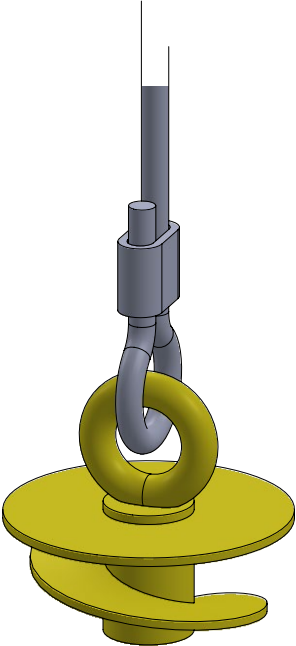
Specifications

Product Name	Fabric Cloud or Dimensional Cloud
Shape	Rectangles, circles, squares, hexagons, triangles. Custom shapes available.
Dimensional Designs	Aspen, Currents, Dunes, Infinity, Linear, Ripple, Sand Dunes, Silhouettes, Steps, Wave
Content	6–7lb fiberglass board with optional tackable & high-impact resistant facers, 100% post-consumer recycled polyester fabric
Thickness	2" and 4"
Unit Width	Up to 60"
Unit Height	Up to 120"
Weight	2" = 1.6 lbs/ sq ft, 4" = 3 lbs/sq ft
Edge Options	Square or Beveled
Sound Performance	ASTM C423-17: NRC 0.80–1.31
Fire Performance	ASTM 84 Class A
Environmental	Low VOC emissions, woven fabrics are FR (Flame Retardant) free and compliant with CAL AB 2998.
Maintenance	Vacuum to remove any loose dirt or dust. You may use a soft or plastic bristle brush to loosen it. Avoid excess pressure. Compressed air can also be used to dust the material in difficult or large installations. Remove ordinary dirt and smudges with a mild soap and water solution and a clean, soft cloth or towel. Dry with a soft lint-free cloth or towel. A melamine magic eraser can be used for more difficult stains. Always apply any cleaning methods to a small area first to test effectiveness and result.
Warranty	5 years
Unit of Sale	Per unit

Construction & Hardware



Rotofast Cloud Anchor



Colors

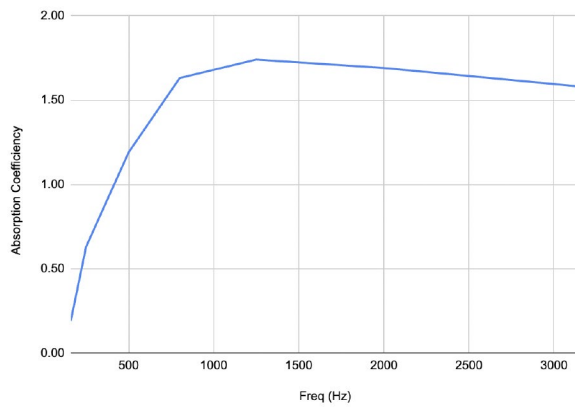
We currently offer over 40 standard colors thanks to our partnership with Burch. See our Standard Fabrics document on the next page for a complete listing.

We also carry a wide array of other acoustic fabrics and colors by Guilford of Maine, Knoll, Maharam, and more.

Test Results

2" Fabric Cloud

Absorption Coefficient vs. Freq (Hz)



Freq (Hz)	Absorption Coefficient
160	0.19
250	0.63
500	1.19
800	1.63
1250	1.74
2000	1.69
3150	1.58
NRC	1.31

The Noise Reduction Coefficient (NRC) is calculated as the arithmetic average of the absorption coefficients in the shaded bands only (250, 500, 1250 & 2000 Hz).

ASTM C 423-17: Type J Mounting - using 6 cloud units suspended with aircraft wire to simulate a typical baffle installation.

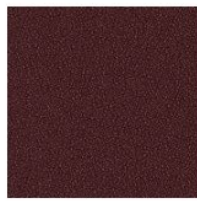
Prime Time



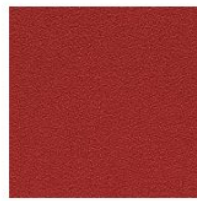
Tangerine



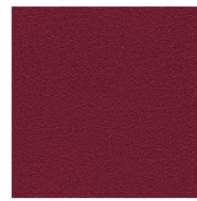
Paprika



Shiraz



Scarlet



Fuchsia



Violet



Admiral



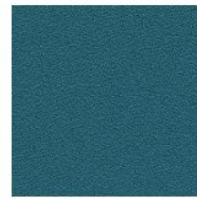
Marina



Azure



Peacock



Tropic



Chambray



Aloe



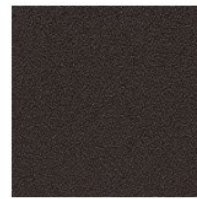
Key Lime



Spring



Spruce



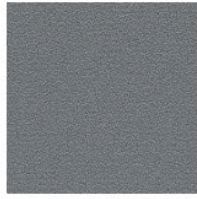
Brownie



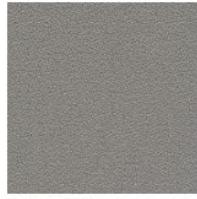
Jet Black



Shale



Elephant



Cinder



Parchment



Mink



Sterling



Chino



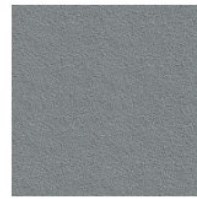
Lunar



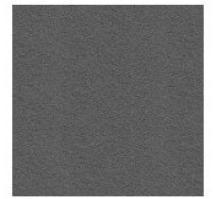
Stucco



Silverado



Shark



Granite



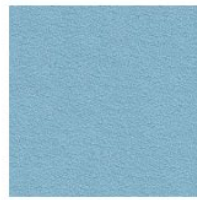
Academy



Cerulean



Bluestone



Delft



Lichen



Shamrock



Fairway



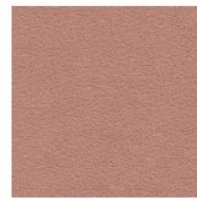
Ray



Copper



Woodrose



Bloom



Printable