



CSD-QUA-03



CSD-QUA-02



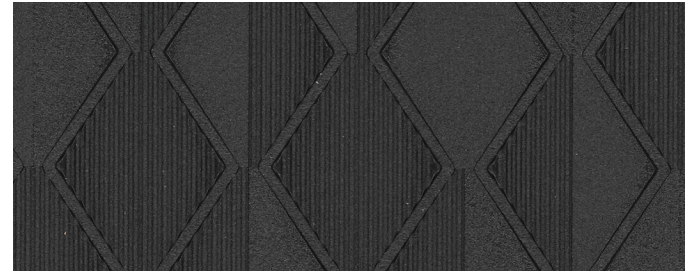
CSD-QUA-01



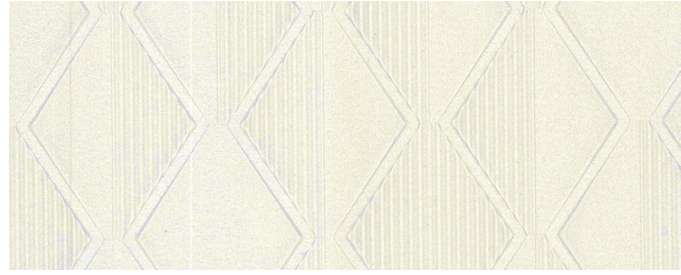
CSD-QUA-21



CSD-QUA-20



CSD-QUA-19



CSD-QUA-04



Quadrille



CSD-QUA-05



CSD-QUA-06



CSD-QUA-07

Weight: 32 oz | Width: 53/54" | Backing: Poly Cotton/Osanburg | Low VOC
Class A Fire Rated | Ultra-Fresh Antimicrobial | Stain Resistance



PRODUCT SPECIFICATIONS:

CREATE SURFACE DESIGN WALLCOVERING MEETS OR EXCEEDS ALL REQUIREMENTS OF FEDERAL SPECIFICATION CCCC-W-408A-D, W-101 QUALITY STANDARD FOR POLYMER COATED FABRIC WALLCOVERING AND EN 15102, EUROPEAN STANDARD FOR DECORATIVE WALLCOVERINGS. THIS PRODUCT HAS BEEN ACCEPTED FOR USE BY THE CITY OF NEW YORK DEPT. OF BUILDINGS UNDER MEA-381-93M.



INSTALLATION NOTE
STRAIGHT ACROSS MATCH/ NON-REVERSIBLE
(CUT LINE SHOULD BE DOWN CENTER OF DIAMOND)
For specifications and hanging instructions go to surfacematerials.com



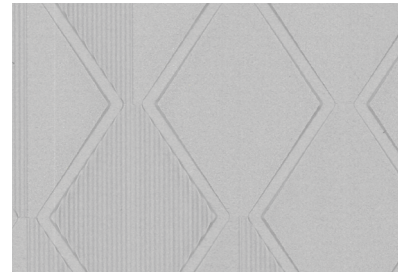
(440) 248-0000
6655 parkland boulevard
solon, ohio 44139
(440) 519-1950 fax
www.surfacematerials.com



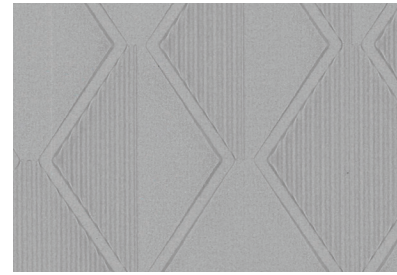
CSD-QUA-08



CSD-QUA-09



CSD-QUA-10



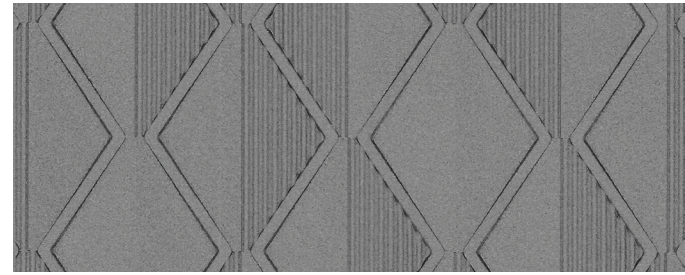
CSD-QUA-11



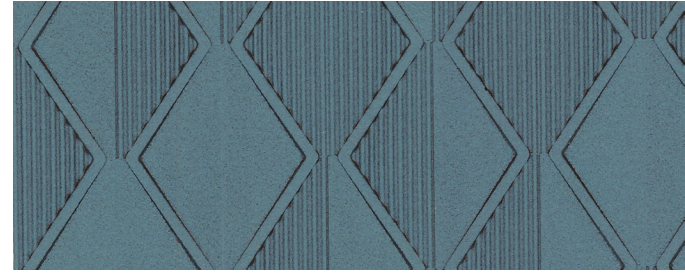
CSD-QUA-12



CSD-QUA-13



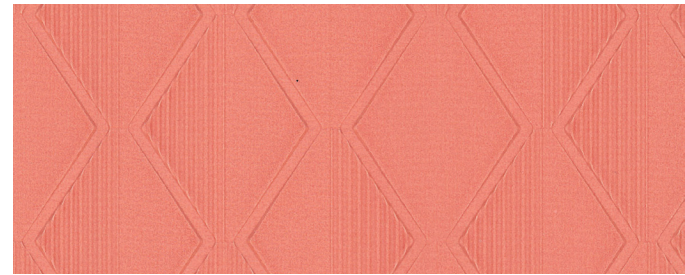
CSD-QUA-14



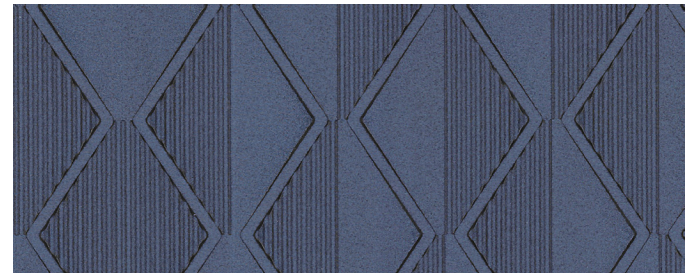
CSD-QUA-18



CSD-QUA-17



CSD-QUA-16



CSD-QUA-15