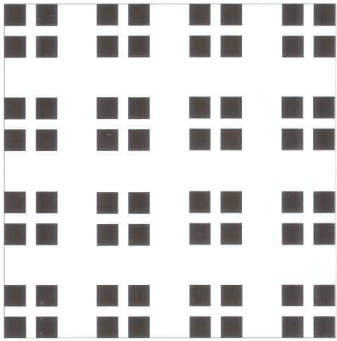


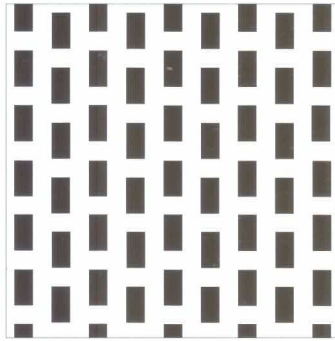
**OCTOPERF** combines the subtleties of natural wood veneers with the decorative qualities of a perforated metal. Stocked in 12 to 10 different patterns, in maple, beech, paintable hardboard and silver metallic like foil.

**OCTOPERF** is ideal for applications such as dividers, ceilings, wall panelling and fixturing.

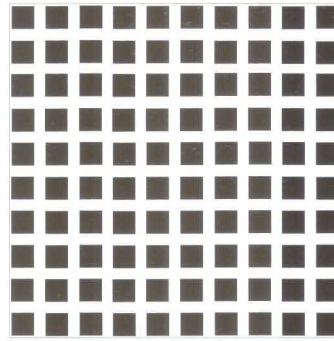
**OCTOPERF** can be easily cut, finished with stains or paints, and even curved.



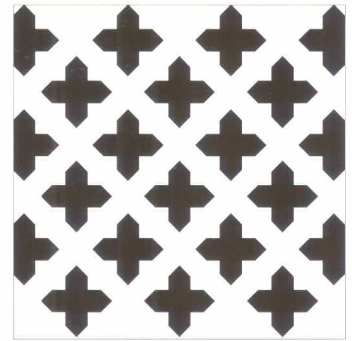
OCTOPERF 8003



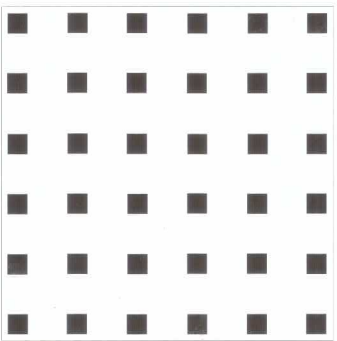
OCTOPERF 8009



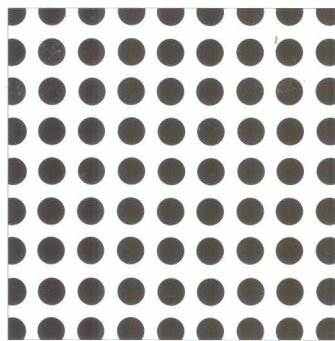
OCTOPERF 8011



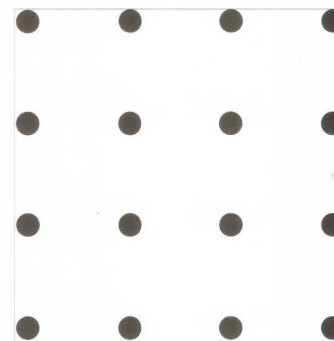
OCTOPERF 8012



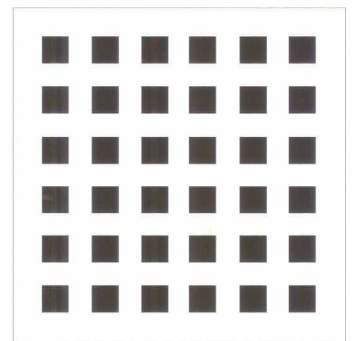
OCTOPERF 8013



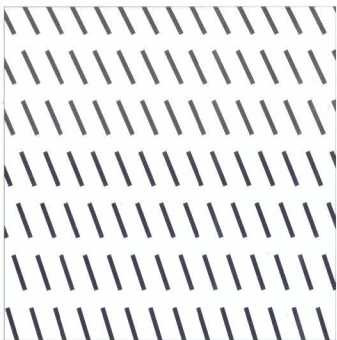
OCTOPERF 8014



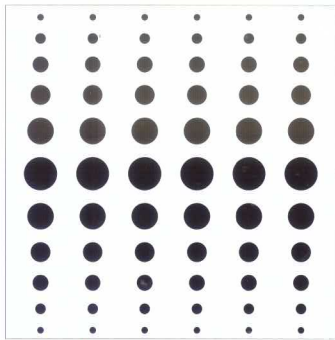
OCTOPERF 8015



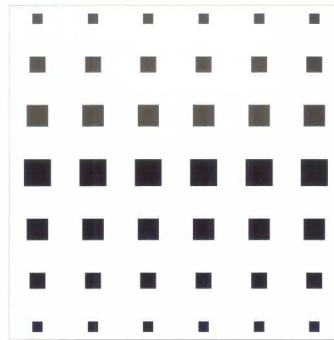
OCTOPERF 8017



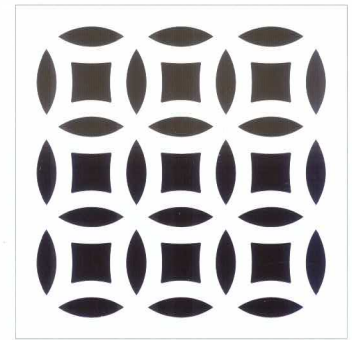
OCTOPERF 8019



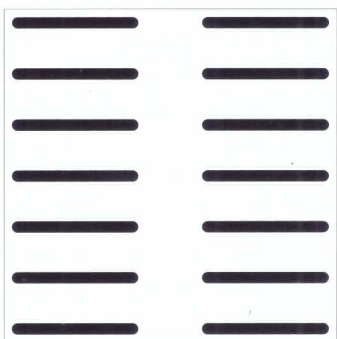
OCTOPERF 8020



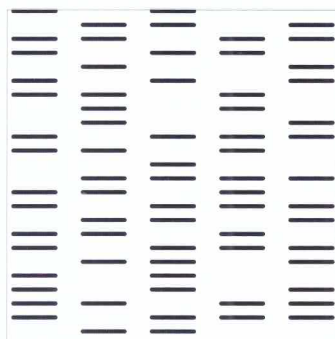
OCTOPERF 8021



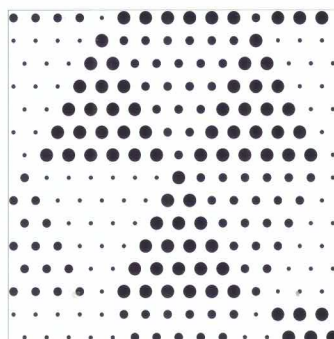
OCTOPERF 8022



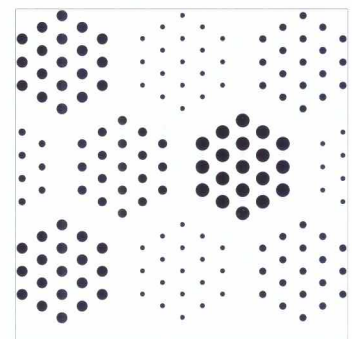
OCTOPERF 8023



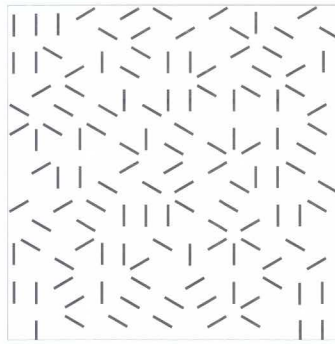
OCTOPERF 8024 FREQUENCY



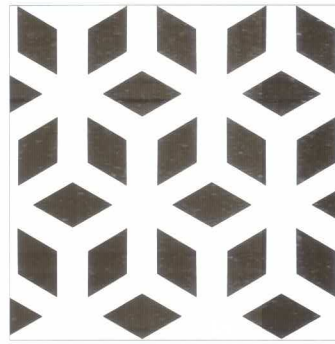
OCTOPERF 8025 FISH



OCTOPERF 8026 CHIPS



OCTOPERF 8027 CRAZY CHICKEN



OCTOPERF 8028 ROMBOX

## OCTOPERF TECHNICAL SPECIFICATIONS

<b>CORE:</b>	HIGH DENSITY FIBREBOARD (HDF)
<b>SURFACE:</b>	DECORATIVE FACE: BEECH, MAPLE VENEER / SILVER METALLIC LIKE FOIL BALANCE FACE: ANIGRE
<b>SHEET SIZE:</b>	HDF 48 x 120" BEECH, MAPLE 48 x 120" SILVER METALLIC FOIL FACE 48 x 120"
<b>CUSTOM PRODUCT:</b>	SHEET SIZES ACCORDING TO CUSTOMERS REQUIREMENTS NON STANDARD VENEERS SOLID GRADE LAMINATE NOTE: CUSTOM ORDERS SUBJECT TO LEAD TIMES AND FACTORY MINIMUMS

PATTERN	HOLE SIZE	HOLE SPACING	%OPEN AREA	BENDING RADIUS*
8003	8mm - .3"	12mm - .5"	20%	65cm - 25"
8009	6x11mm - .4x.25"	N/A	32%	40cm - 15"
8011	8mm - .3"	14mm - .6"	33%	40cm - 15"
8012	N/A	N/A	42%	40cm - 15"
8013	11mm - .4"	45mm - 1.75"	6%	40cm - 15"
8014	12mm - .4"	22.5mm - .85"	22%	43cm - 17"
8015	10mm - .4"	40mm - 1.6"	5%	65cm - 25"
8017	8mm - .3"	14mm - .6"	25%	40cm - 15"
8019	3x25mm - .125x1"	Varies	9%	45cm - 18"
8020	Varies	Varies	11.9%	45cm - 18"
8021	Varies	Varies	13.6%	45cm - 18"
8022	Varies	38mm - 1.5"	40%	45cm - 18"
8023	4.5x50mm - .18x2"	19mm - .75"	15%	45cm - 18"
8024	3x25mm - .125x1"	Varies	13%	45cm - 18"
8025	Varies	Varies	18%	45cm - 18"
8026	Varies	Varies	7%	45cm - 18"
8027	Varies	38mm - 1.5"	5%	45cm - 18"
8028	4.5x50mm - .18x2"	19mm - .75"	30%	45cm - 18"

\* For paint grade hardboard bent across the 48" sheet width